

Success for Spring

Andy Fusco, Acting Executive Director

March 2025



Tulsa Garden Center
at Woodward Park



Set Garden Goals

More Color

Bigger Vegetable Harvest

New Landscaping

Less Garden

Smarter Maintenance





Goal: More Color

Annual Displays: lots of color, low diversity & ecological value

Perennials: color seasonally dependent, high diversity & ecological value

Companion or Mixed Plantings





Goal: Bigger Vegetable Harvest

Single Harvest Crop vs Continuous Harvest

Is spring bed prep better than cool season veggies?

Start your plants from seed



Single Harvest Crops

Carrots

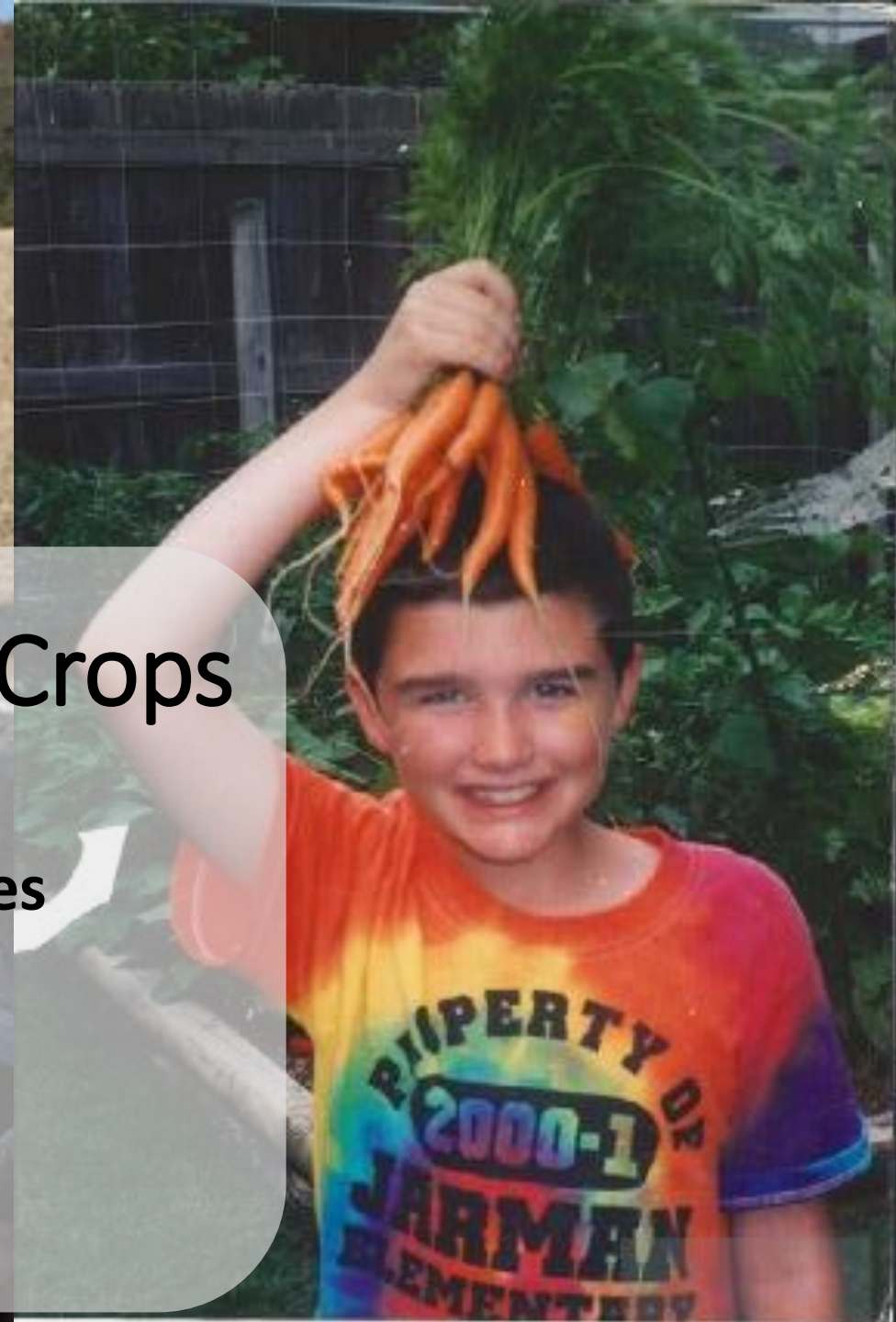
Sweet Potatoes

Cabbage

Garlic

Beets

Onions





Bed Prep Over Spring Veggies

Compost increases soil water holding capacity

Compost also improves soil drainage

Choose mulches ideal for vegetable gardens

-Alfalfa Hay, Cotton Seed Hulls, & Legume Cover Crops

Healthier soils lead to better developed mycorrhizal networks, increasing nutrient and water availability





Start From Seed

Timing is everything—Read your seed packets

Start up costs can be high, but cost effective over multiple seasons

Hardening off crucial to transplant success

You don't have to plant everything you grow





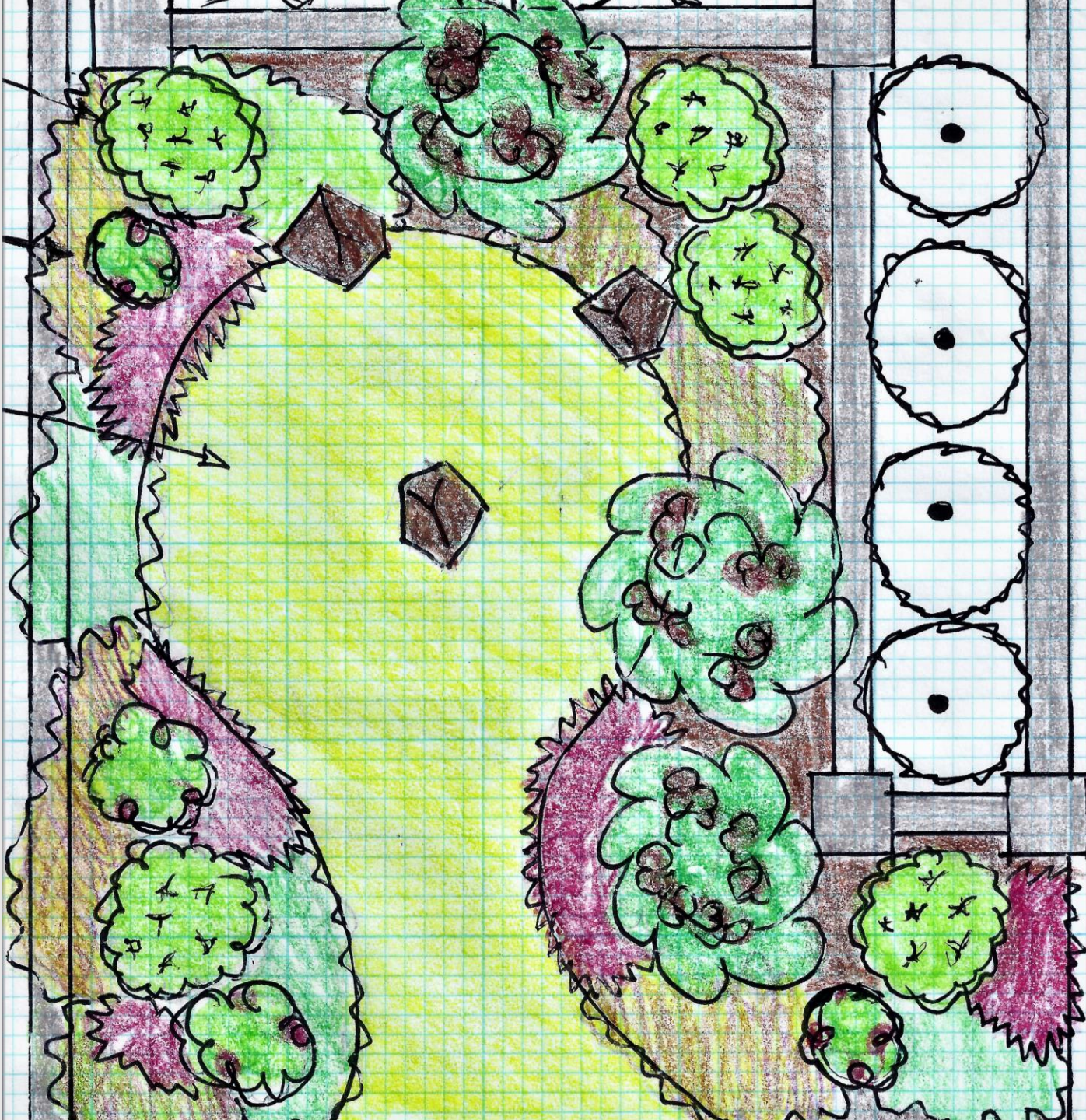
Goal: New Gardens

Don't try to do it all at once

Design and prep for fall install

How do you want to utilize your garden?











Please
Stay
On
Pathways

Buffalograss Establishment

This garden area has undergone a big transformation! We are currently establishing a native, drought-tolerant turf grass, Buffalograss (*Bouteloua dactyloides*). Please stay on paths while it matures.



 Teaching Garden
at the University of Tennessee Park





Goal: Less Landscapes

You are the best judge of your commitment level

Potted Plant Displays

Xeric Gardens & Wildflower Plots

Volunteer your green thumb





Potted Plant Displays

Add color and utility without added bed maintenance

Place strategically for ease in watering or harvest

Easy to combat pest or disease problems

Can be purchased pre-planted





Xeric Gardens



Xeric Garden

Collection of Heat and
Drought Tolerant Species



Wildflower Gardens





Volunteer





Volunteer





Goal: Smarter Maintenance

Install & maintain irrigation before it needs it

Use both traditional and 'green' mulch

Plant new plants ASAP

No such thing as a maintenance free garden

Changing Climate will require tougher gardens and more adaptable gardeners

Healthier Garden Ecosystems require less inputs



Changing Climate Changes Our Gardens

Historically iconic plants may no longer be able to survive in their historic ranges

Urban gardens combat 'heat island' effect

Higher average temperatures & shifting precipitation patterns

Increased drought pressure on our established gardens

Extreme weather events more common



Encourage Healthier Garden Ecosystems

Group plantings according to moisture needs to avoid over or under watering

Plant densely to shade the soil and reduce evaporation

Use groundcovers strategically to form a green mulch

Utilize plants adapted to local climate extremes



The work we do in our gardens today can save us work and heartache in the toughest days of summer.

These same measures also have a positive effect on the environment and the broader ecosystems that we are all a part of.

The background of the slide is a collage of two garden photographs. The left side shows several white flowers with yellow centers and green foliage. The right side shows a large yellow and black butterfly perched on a purple flower stalk. A semi-transparent white box with black text is centered over the collage.

Celebrate Wins

What makes a garden successful?



ENJOY YOUR GARDEN

LIFE IS BEAUTIFUL
ENJOY EVERY MOMENT



afusco@tulsagardencenter.org

918-576-5155

www.tulsagardencenter.org